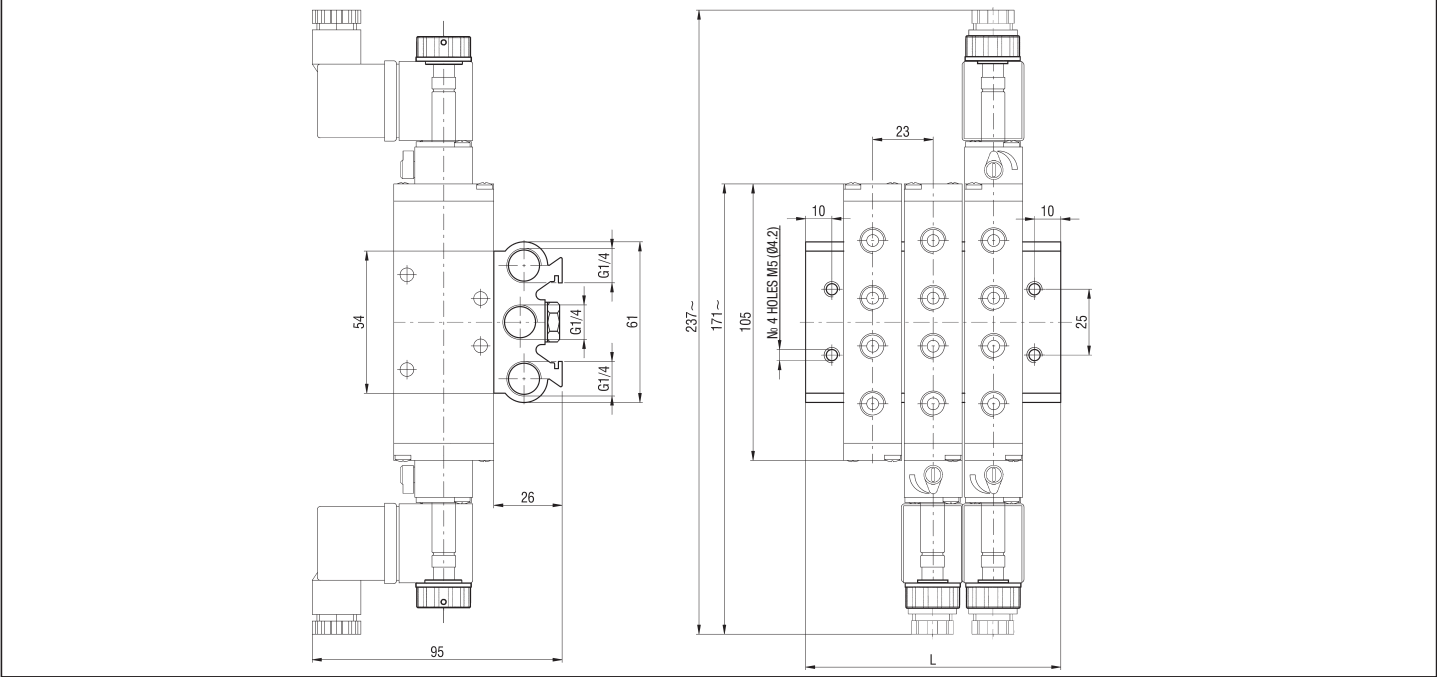


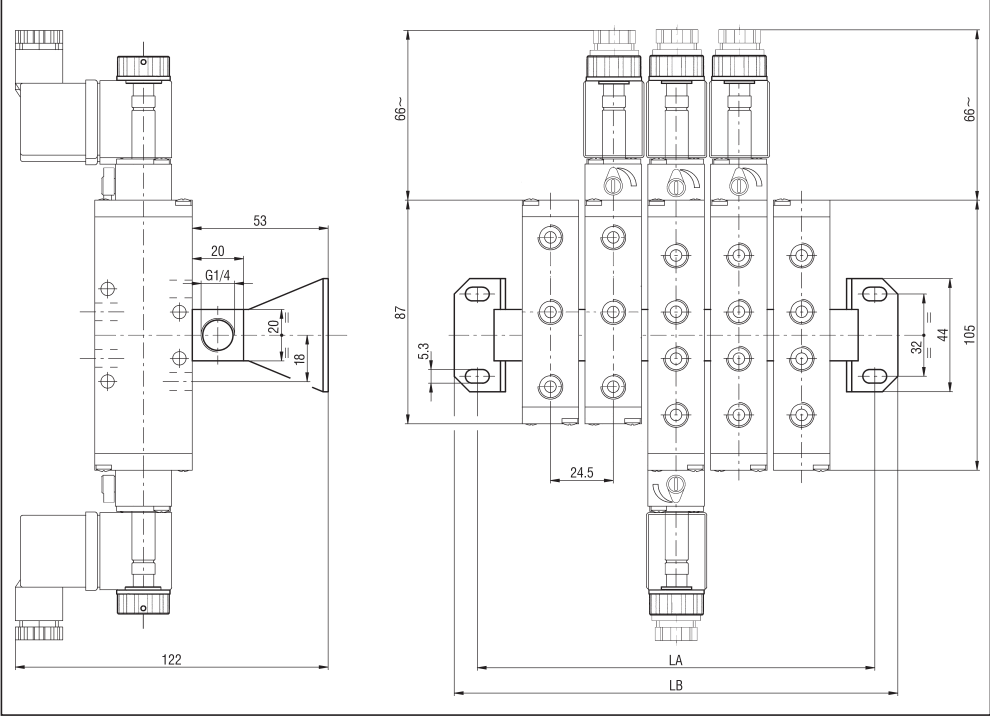
BASE FOR MANIFOLD MOUNTING OF VALVES G 1/8 - KB/EK8



No of stations	2	3	4	5	6	8	10	12	14	16	18	20
L	74	97	120	143	166	212	258	304	350	396	442	488
Weight (g)	220	285	350	415	480	610	740	870	1000	1130	1260	1390
TYPE*	KB/EK8/2	KB/EK8/3	KB/EK8/4	KB/EK8/5	KB/EK8/6	KB/EK8/8	KB/EK8/10	KB/EK8/12	KB/EK8/14	KB/EK8/16	KB/EK8/18	KB/EK8/20

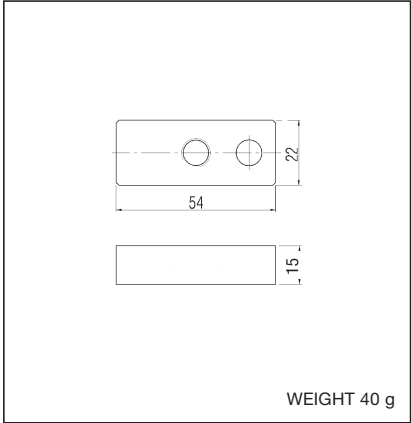
*BASES ARE SUPPLIED COMPLETE WITH HOLLOW SCREWS AND SEALS

SUPPLY RAIL FOR MANIFOLD MOUNTING OF VALVES G 1/8 - CEK8



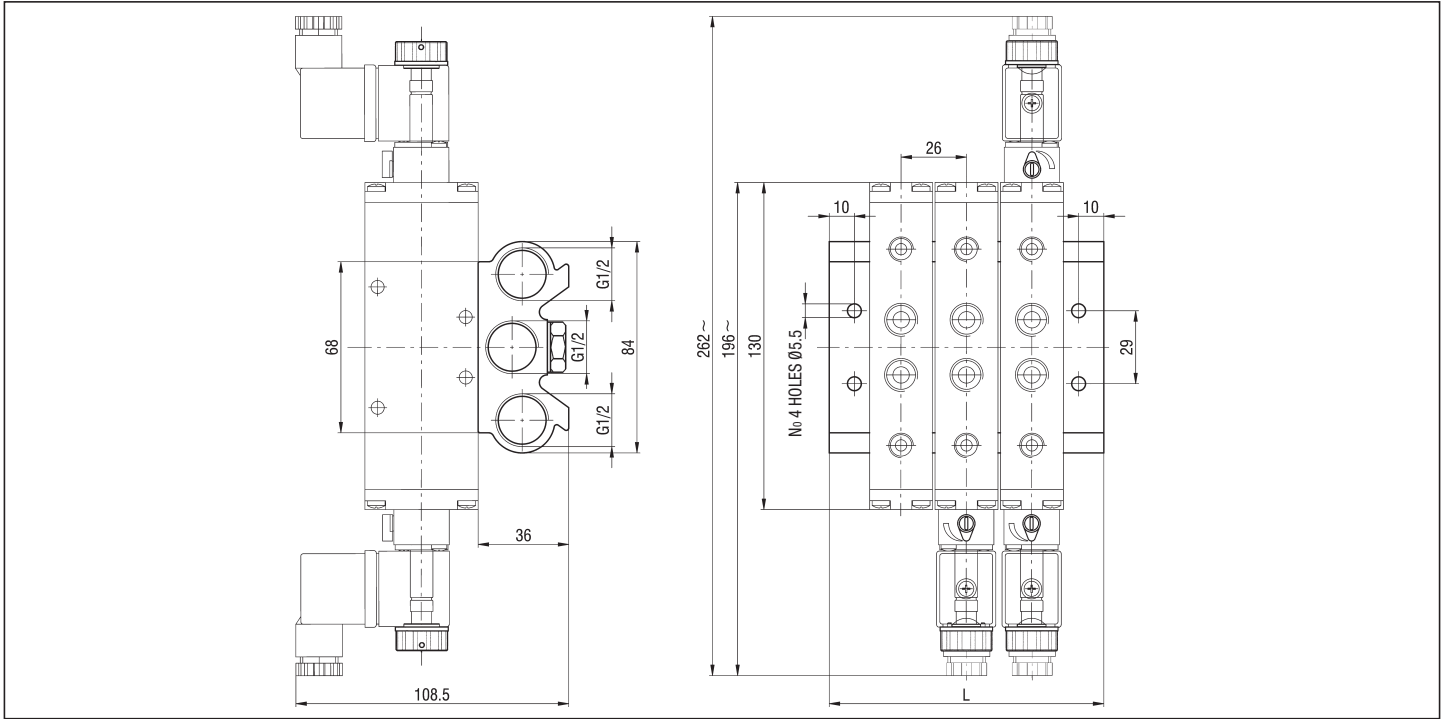
*SUPPLY RAILS ARE SUPPLIED COMPLETE WITH HOLLOW SCREWS, SEALS AND FIXING BRACKETS
P.S.: CAN BE MOUNTED ONLY SILENCERS SERIES **SS-01** (SEE THE HIDDEN SILENCERS ON PAGE 5.52)

BLANKING PLATE - KIT/PC/EK8



No of stations	2	3	5
LA	83	105	150
LB	101	123	168
Weight (g)	135	170	240
TYPE*	CEK8/2	CEK8/3	CEK8/5

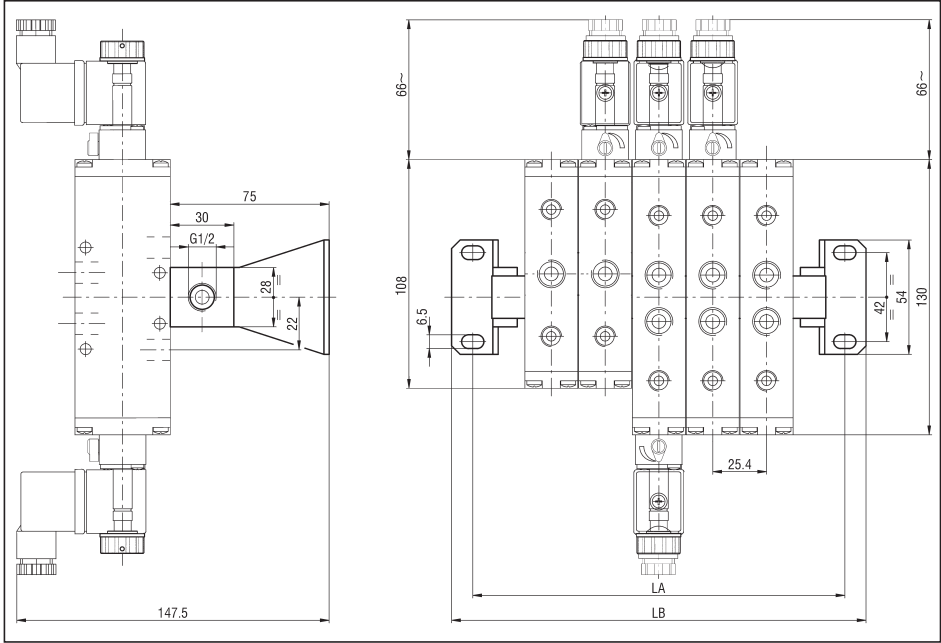
BASE FOR MANIFOLD MOUNTING OF VALVES G 1/4 - KB/EK4



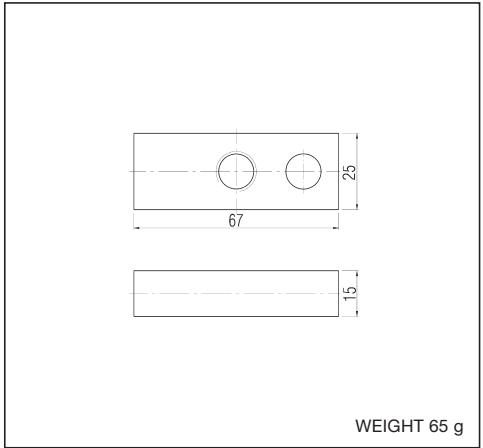
No of stations	2	3	4	5	6	8	10	12	14	16	18	20
L	83	109	135	161	187	239	291	343	395	447	499	551
Weight (g)	460	590	720	850	980	1240	1500	1760	2020	2280	2540	2800
TYPE*	KB/EK4/2	KB/EK4/3	KB/EK4/4	KB/EK4/5	KB/EK4/6	KB/EK4/8	KB/EK4/10	KB/EK4/12	KB/EK4/14	KB/EK4/16	KB/EK4/18	KB/EK4/20

*BASES ARE SUPPLIED COMPLETE WITH NOTCH SCREWS AND SEALS

SUPPLY RAIL FOR MANIFOLD MOUNTING OF VALVES G 1/4 - CEK4



BLANKING PLATE - KIT/PC/EK4



No of stations	2	3	5
LA	99	125	176
LB	119	145	196
Weight (g)	310	390	550
TYPE*	CEK4/2	CEK4/3	CEK4/5

* SUPPLY RAILS ARE SUPPLIED COMPLETE WITH NOTCH SCREWS, SEALS AND FIXING BRACKETS
P.S.: CAN BE MOUNTED ONLY SILENCERS SERIES **SS-02** (SEE THE HIDDEN SILENCERS ON PAGE 5.52)